

Stakeholder Benefits

Heidi Hittner
Chief Experience Officer



Key Takeaways



**Payors Benefit from
Above-Market Growth in
Non-Traditional
Geographies**



**Better Patient Experience
Through Aligned, Lifelong
Relationship with Existing
PCP and Care Team**



**Communities and Local
Healthcare Delivery Benefit
from Enhanced PCP Access
and Moving Market to
Value at Scale**

Payors Benefitting from the agilon health Model

Enhanced Quality & Benefit Design

- Partner for PPO risk in non-traditional geographies
- Preventative screening that match 4–5 star ratings
- Support patients to be educated about their benefits

Creating Scalable Partnerships

- Aligned with CMS goal of moving another 30,000,000 seniors into total cost models by 2030
- Scalable partnership for nationals: standard contracting/data, JOCs
- Regionals plans able to move to value for the first time

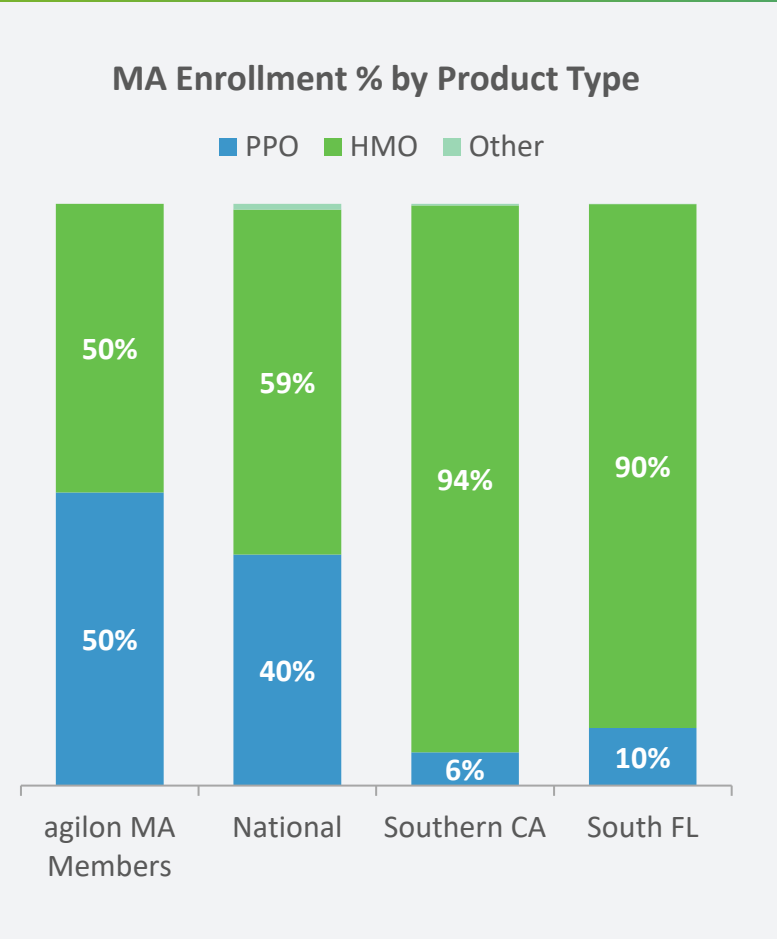
Predictable & Optimized Economics

- Above-market member organic growth rate (1.5 to 2x)
- Consistent gross margin
- Enhanced quality measures

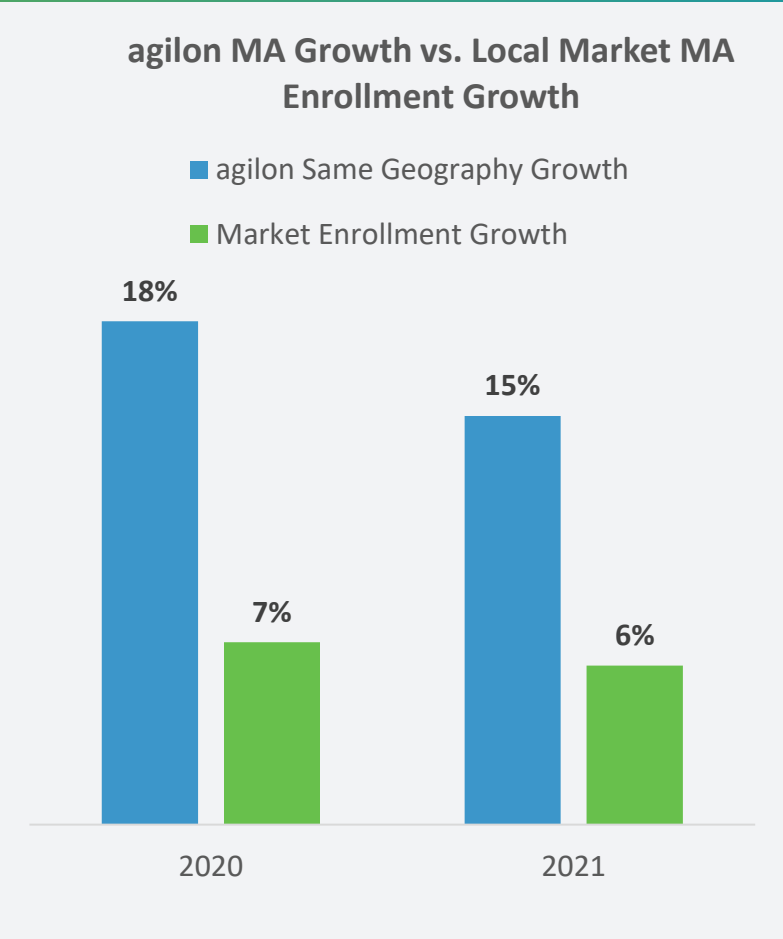


Payors Growing VBC Membership in Non-Traditional Geographies

PPO is a Critical Product for MA Outside of California and Florida



Membership Growing 1.5–2x+ Across Diverse Geographies

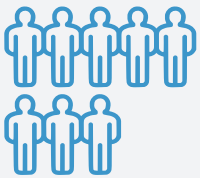


Significant Opportunity in Existing Partner Panels



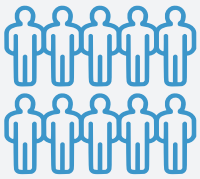
100,000

Medicare Eligible on Commercial



165,000

Patients 60–64 That Will Age-Into Medicare



200,000

Patients on Traditional Medicare

Note Membership growth 2020-2021

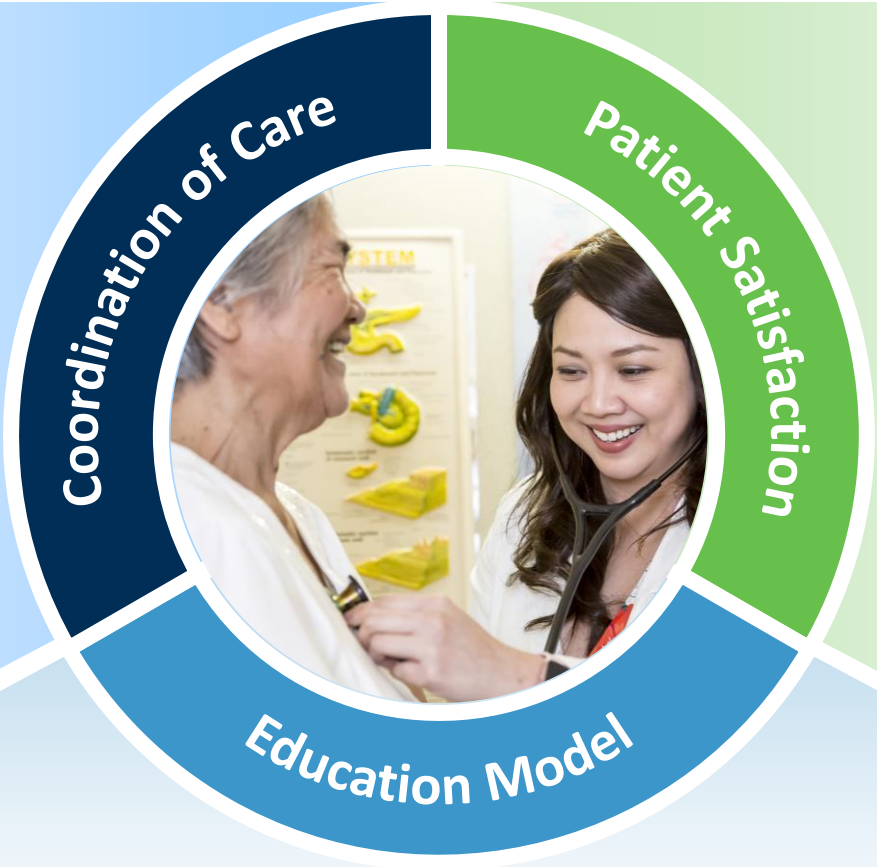
Lifelong PCP Relationship Creates Industry Leading Patient Experience

High Touch Whole Person-Centered Care

44% more touch points
for high-risk patients

11
year average
tenure of
partners PCP

89%
rely on PCP
for specialist
recommendations



World Class NPS 80+

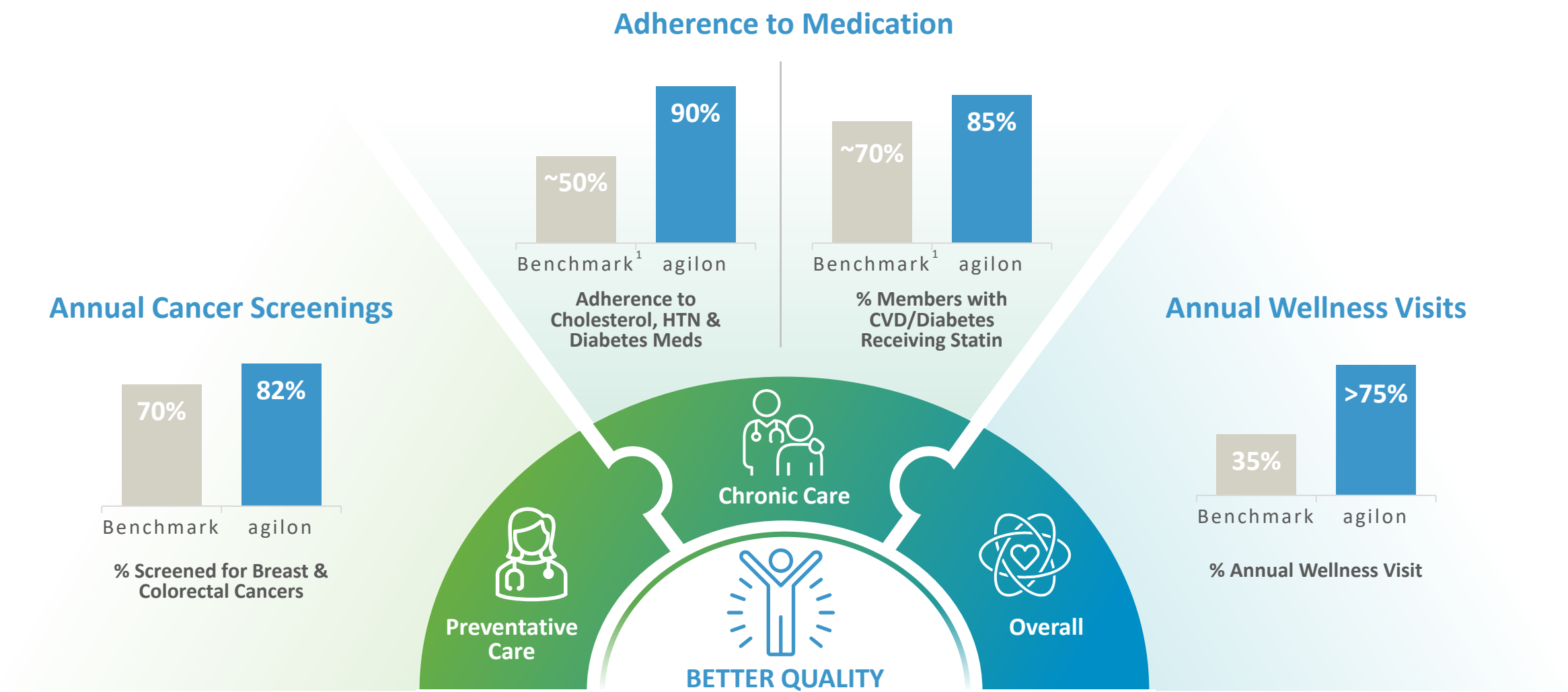
94%
agree they receive
comprehensive,
high-quality care

Routinized model that supports **patient education about their options**

More comprehensive benefits available through MA

Communicate by cohort **through lens of their PCP**

Patients Benefit from Improved Health Outcomes



Note: Annual cancer screenings metrics reflect partner markets. 1. Benchmark for unmanaged patients.

Communities Benefitting from the agilon Health Model



Expanded Primary Care Access for Seniors

89% of PCPs accepting new seniors (vs. 70% nat'l avg)

+6% increase to Primary Care capacity over past year

85% of leading plans in markets contracted through agilon model



Commitment to Underserved Communities

43% of our partners office locations are in federally-designated underserved communities

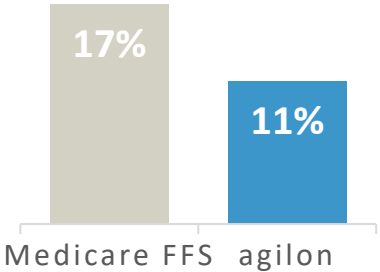


Catalyst for Holistic Delivery System Move to Value

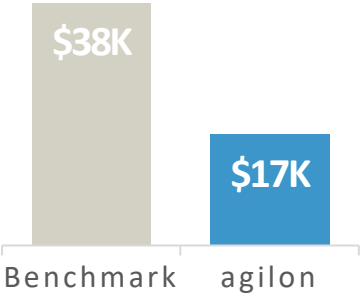
ALL Patients benefit when we move the community to value



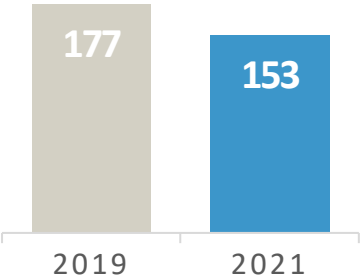
burden on the community delivery system



30%
Better Readmission Rates in 2021 vs. Medicare FFS



58%
Reduction in Total Spend for Columbus Palliative Patients Enrolled 90 Days Prior to Death, and Improved Quality



14%
Decrease in IP Admits per Thousand¹ (2021 vs. 2019)

1. Admits Per Thousand Across Same Partner Markets, due to improved access to the right care at the right time.

